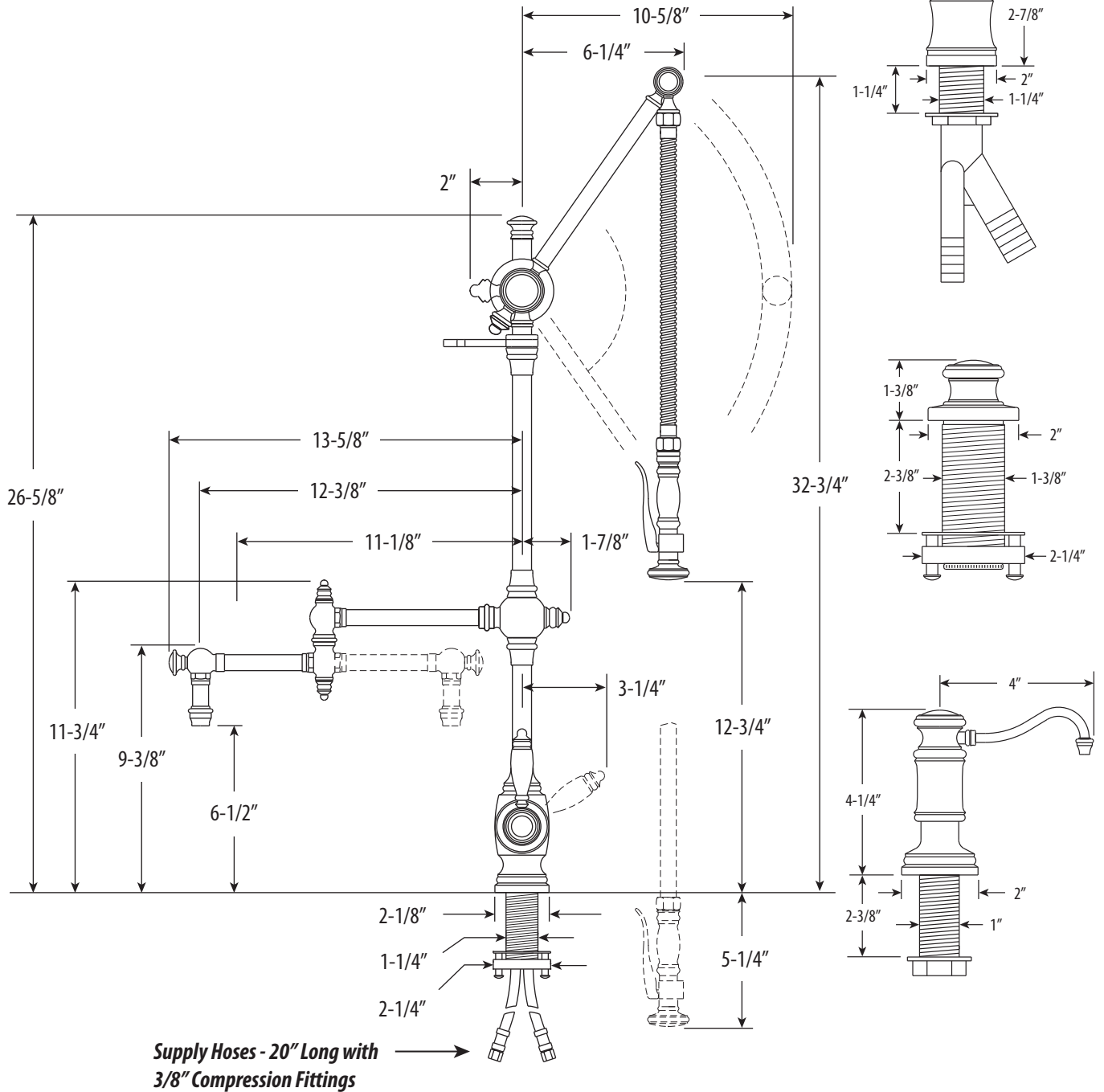


TRADITIONAL GANTRY FAUCET / 12" ARTICULATED SPOUT / 4PC. SUITE

4410-12-4

- Max Counter Thickness 2-3/8"
- Minimum Install Hole Size 1-3/8"



ECO BRASS
HIGH PERFORMANCE LEAD FREE BRASS

DIMENSIONS MAY VARY AND ARE SUBJECT TO CHANGE. NO RESPONSIBILITY IS ASSUMED FOR USE OF SUPERCEDED OR VOIDED DATA