



California Faucets®

Descanso Works®

Single Handle Combo Hot & Cold Water Dispenser

Features

- 25+ artisan finishes including 12 PVD finishes
- All brass construction
- Insulated to reduce heat to faucet
- Self-Closing for hot water
- Max flow rate: 1.0 gpm (3.8 L/min)
- **Not** compatible with RO filter units
- Requires Hot Water Tank (9628SS) sold separately

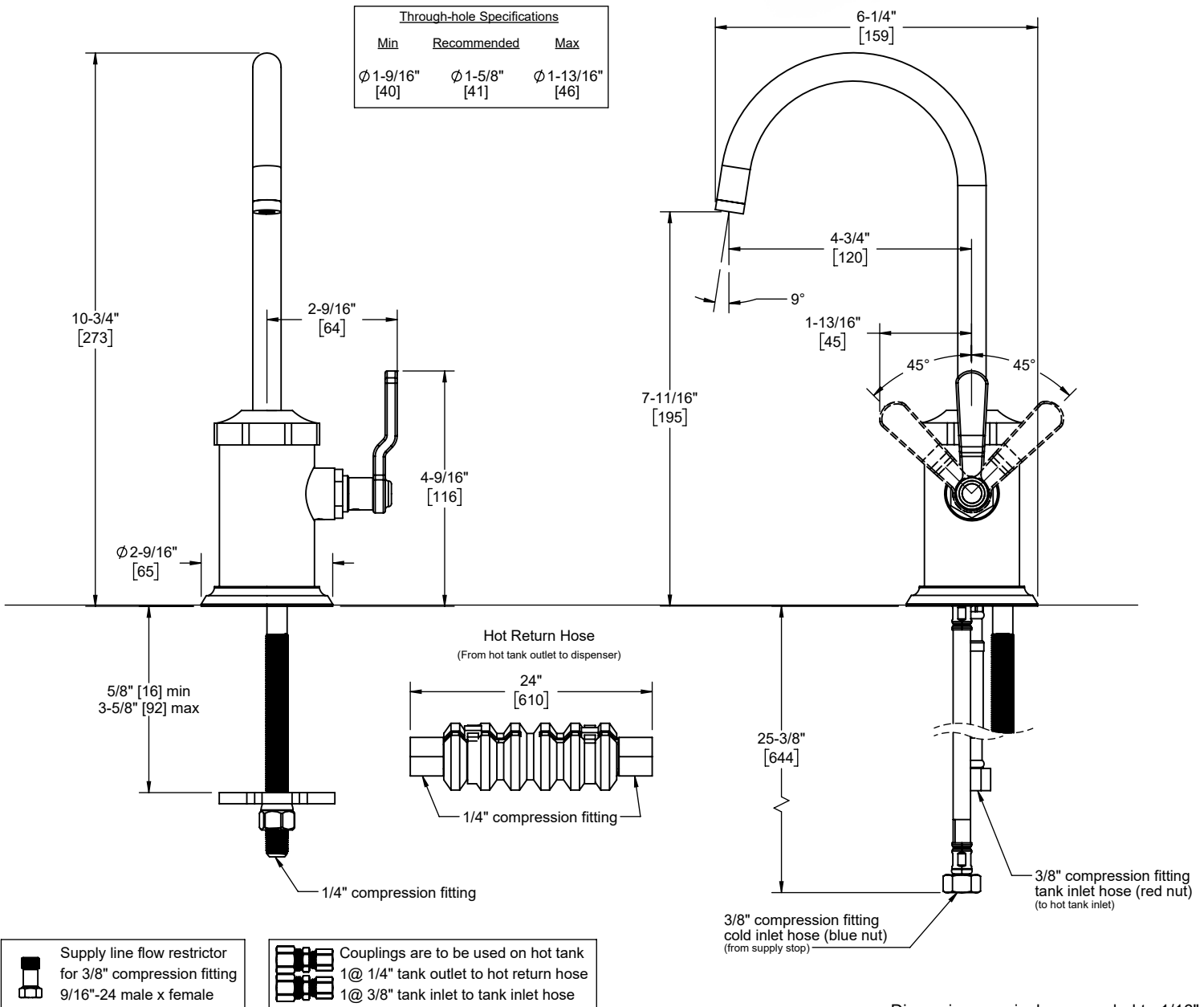
9623-K81-BL



Codes/Standards Applicable

Product meets or exceeds the following:

- ASME A112.18.1/CSA B125.1
- NSF 61, NSF 372, CEC, & DOE
- Commonwealth of MA
- ADA compliant



Specifications subject to change without notice

Dimensions are inches, rounded to 1/16"
[Dimensions in brackets are mm, rounded to 1mm]